

heavy duty pocket door guides

Download heavy duty pocket door guides



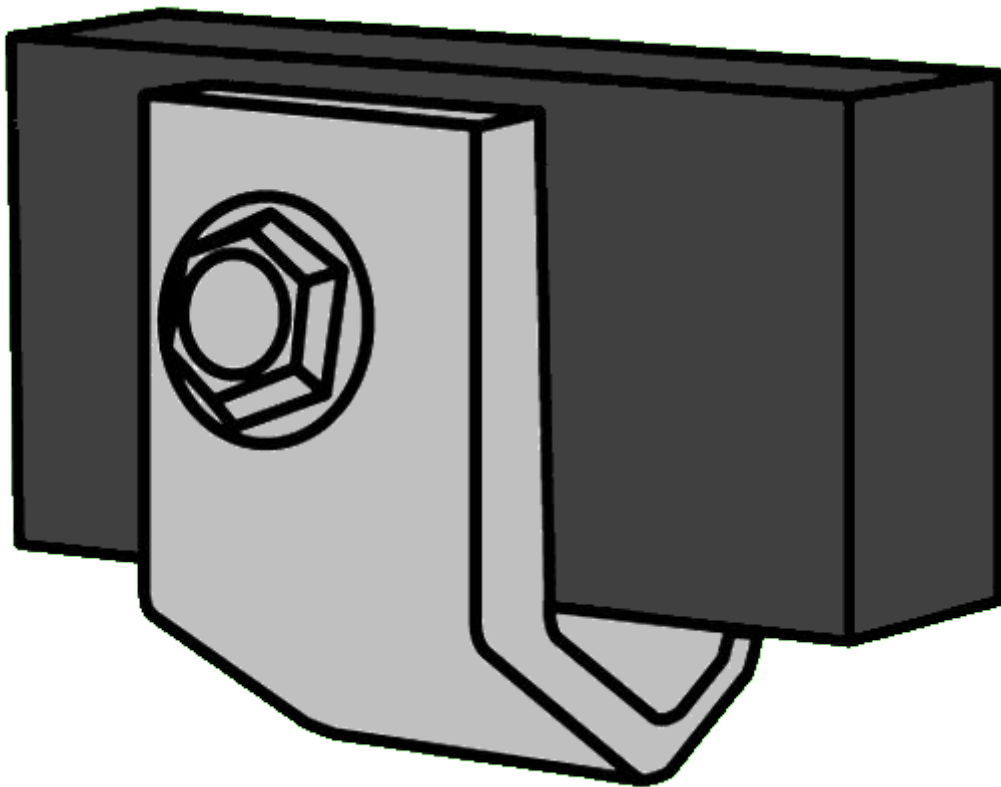
Our software is
100% SAFE
to download!



Spyware Free
Adware Free
Virus Free



100%
GUARANTEE
VIRUS FREE SOFTWARE



dimensions page : Floor Mounted Guides Requires 1/4 Kerf in bottom of the door Great for Pocket doors

2000 Series Johnson Hardware Pocket Door Frame. Technical Ratings: Manufacturing Specifications:
Grade: Commercial Grade ANSI Certified

Johnson Hardware Pocket Door Frame Specification Guide: Series: 2 x 4. Wall: 2 x 6. Wall: Max. Door
Weight: Max. Door Width: Max. Door Height: Door. Thickness: Split Stud

Heavy duty commercial grade for 1 3/8 or 1 3/4 doors up to 125 lb. Track is heavy extruded aluminum
with convex rails. Tricycle hangers (model Product Information.

Johnson Hardware® 1500 Series Pocket Door Install Video: 2060 SERIES POCKET DOOR FRAME:
1500 Series Pocket Door Frame: 1560 Series Pocket Door Frame

Amana HDC18SD2 1800W Heavy Duty Stainless Steel Commercial Microwave with Solid Door -
208/240V

These Emtex Pocket Door Mortise Locks invoke the memory of high quality pocket door hardware from

the late 19th century, manufactured today to exacting standards.

Complete Hanging Door Kits : Choose from Pocket Door or Straight Sliding: A. Pocket Door Kit includes: 1 piece track 6 or 8 Aluminum: 2 Ball Bearing

Welcome to PocketDoorProducts.Com, your online source for all the items needed to install and use with your pocket door. We have everything from L. E. Johnson.

Go BIG with the Kreg Jig HD Heavy-Duty Pocket Hole Jig-a supersized, industrial-strength Kreg Jig optimized for working with 2x4 stock and.